

Creating logs for “Found” and “DNFs”with Cachemate on a PDA while geocaching

Heiner Lieth (a.k.a. Hynr)

One of the things you might want to do as part of paperless geocaching is to create your log for geocaching.com while you are out geocaching. If you have a device that lets you connect to the internet, then you can do this with the WAP interface (WAP.geocaching.com); in that case you can skip this. This file is for folks who want to make their notes in Cachemate to later log at the geocaching.com website when they are at their home computer.

This text assumes that you have a Palm PDA on which you have installed Cachemate. Also, you should have the ability to sync this PDA to the computer where you have GSAK and your database. This same computer does need to be able to go on line to geocaching.com

Note that there is no way to upload a file of stuff to geocaching.com to do the logging in one batch. You need to do it manually cache-by-cache. But it goes very fast if you have already typed in all your notes.

In Cachemate, on the Log page, there is a checkbox for “found” and empty lines where you can key in text with the Graffiti pad or the on-screen keyboard. It is, of course, a bit cumbersome to type in long sentences, but with a little practice you may find that it works pretty well.

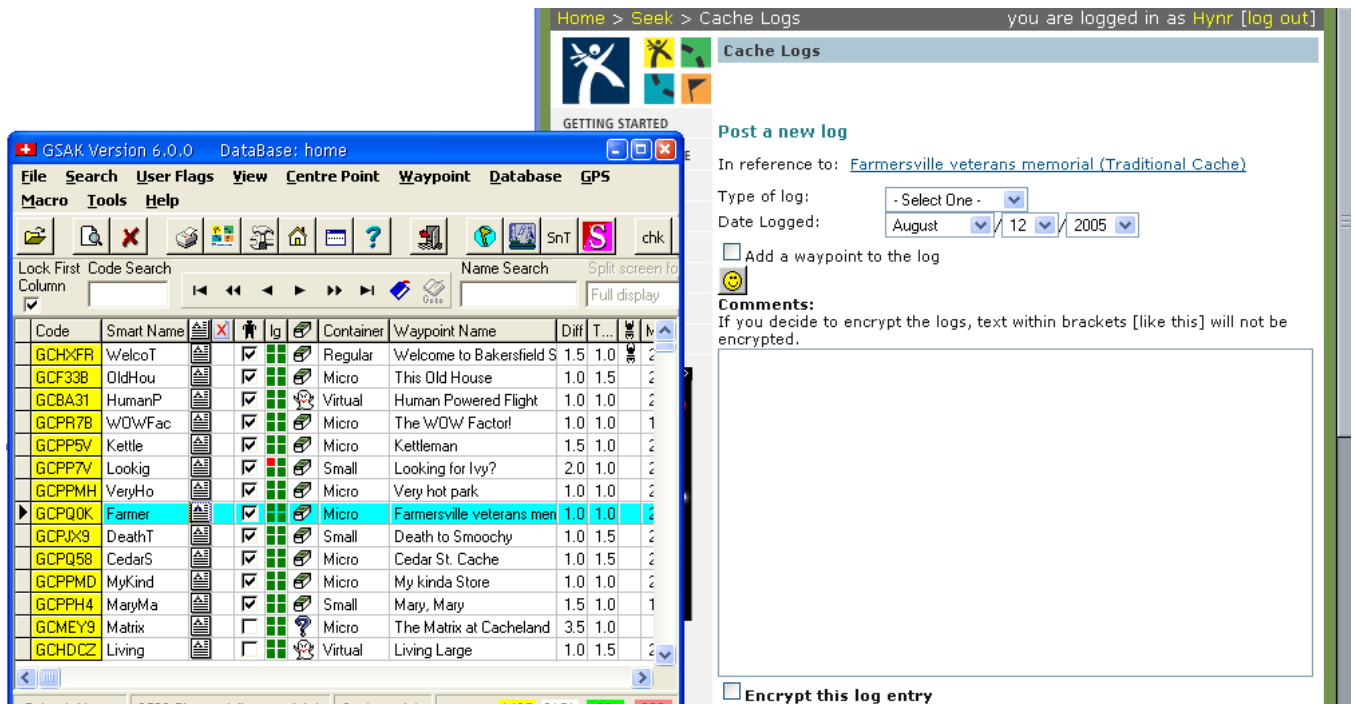
The tricky part is to get these logs from the PDA to geocaching.com. Here is the way that I do it with a macro and batch file using the GSAK/Cachemate combination. This assumes that you have loaded up the PDA with the cachmate pdb file(s) using GSAK and that at the end of your cacherun you still have the same database that you used originally.

You need the cm2gpx.exe utility that you can get at smittyware.com. You can put this file in any folder you like, but you do need to know the full name for that folder.

This description is basically how I do it. The whole thing is a bit complicated and everyone will need to make changes to make it use folder names on their own computers. Also note that I use the GSAK smartnames; if you don't, then you may need to make some adjustments.

Procedure:

1. During the cacherun, I type the found logs and mark “Found” checkbox (which files the record into the “Found” category when “done”. Logs without text will not be transferred unless you mark the end time of the hunt (this is a bug that will be fixed in a future release of Cachemate). I handle DNFs by typing a log, but instead of marking the “Found” checkbox, I change the category to DNF (which I have created for this purpose). I also have a category called Notes where I can write notes which will later be handled as “Write Note” at geocaching.com.
2. I open GSAK and my browser. I log in to Geocaching.com. Then I size the windows so GSAK takes up the left side of the screen and the browser takes up the right side (See next page). I let these windows overlap to give me enough room in the browser window to see what I am doing.



3. Then I bring GSAK to the foreground and run my macro (the full macro is listed at the end of this file). The following happens while the macro is running:

3a. The macro will display a message telling me to Hotsync the PDA with the computer. I do this. This makes a backup of any changed PDA databases on the PC. The file where Cachemate stores any information that is changed or added is one such file. Thus after the hotsync, the logs are actually physically in the PC, but you would be hard-pressed to find them. They are tucked away somewhere in the Palm back-up stuff in a file called DefaultItems-cMat.PDB.

3b. The macro next runs the cm2gpx.exe utility. This Windows program was written by Brian Smith (author of Cachemate) to extract logs from particular categories in this obscure file and create a gpx file containing this information. My system uses a BAT file of commands for the Windows Operating system to do this because I can never remember all the details well enough to type them in. Here is the content of that file:

```

CD "C:\Documents and Settings\Heiner\My Documents\Play\Geo\GSAK\CMT"
del "C:\Documents and Settings\Heiner\My Documents\Play\Geo\GSAK\CMTDNF.gpx"
del "C:\Documents and Settings\Heiner\My Documents\Play\Geo\GSAK\CMTlogs.gpx"

cm2gpx -C "DNF" -e -o "C:\Documents and Settings\Heiner\My
Documents\Play\Geo\GSAK\CMTDNF.gpx" "C:\Program
Files\Palm\LiethH\Backup\DefaultItems-cMat.PDB"

cm2gpx -C "Found:Notes:Not Found" -e -o "C:\Documents and Settings\Heiner\My
Documents\Play\Geo\GSAK\CMTlogs.gpx" "C:\Program
Files\Palm\LiethH\Backup\DefaultItems-cMat.PDB"

pause

```

Some of these lines are very long; so I have added an empty line between each so you can see what is supposed to be on one line. If you cut and paste, then make sure the filenames are like they are on your computer (Note the space in "My Documents" and "Program Files"). If the word

“Heiner” or “LiethH” (i.e. my name) appears anywhere in your file, then you have not finished customizing this to your needs. But don’t just plug in your name - you need the whole folder and file name to be valid for your system and PDA. For the gpx file locations you can pick some arbitrary folder. For the Palm stuff you have to find where that file is located on your computer. If you cannot figure this out, then no one can help you - you are on your own.

Here is what this batch file does (line-by-line)

- The first program line changes default folder for the subsequent commands to the one where the cm2gpx.exe file is located.
- The next two lines delete old files that were created when the program ran before.
- The next program line (all three of those lines of text are on the same program line) runs the program cm2gpx program to pull out all the caches that are in the DNF category in Cachemate. The resulting gpx file is not put in the same folder, but one level higher up. (I don’t remember why I did that; it seemed like a good thing at the time; a bit of advice: don’t use the same folder that you normally use for other gpx files because this is a special gpx file). Note that it finds the obscure file and creates a gpx file named CMTDNF.gpx.
- The next program line (again, all three of those lines are on the same program line) uses the cm2gpx utility to extract all the records that are in the three categories “Found”, “Notes”, and “Not Found” . The resulting gpx file (CMTlogs.gpx) is put in the same folder as the other gpx file (above).
- The last line pauses after the run so that you can see the message from the program. It shows how many logs were converted and other interesting tid bits.

Once you have noted the information there, you can hit Enter to close the CMD window.

The GSAK macro is paused while this batch file runs. Once you hit Return in that window, control returns to the macro and it continues to run.

3c. Now the macro loads the DNF records, sets the userflag and the macroflag; then the others are loaded and only the userflag is set for these. All loaded records are displayed. And for each one the following happens:

- the log cache page is displayed in the browser and set to the correct type of log.
- at the same time the focus is shifted to a dialog that pops up (ignore it, for now)
- switch focus to the browser
- if the log date needs to be changed, then you need to do that manually
- the log text itself is on the clipboard, so put the cursor in the log edit box and type CTRL-V which pastes that in
- if you need to edit this text then do that now.
- with the cursor at the end of the log, hit the tab key until you get to “Submit”, hit return and wait until the log is accepted. (Note that as you tab you can stop on the TB drop-down and select a TB if you dropped one).
- now click on the “Continue” button on the dialog (which might be behind the browser window now)

The whole thing is repeated until all caches have been processed.

Once all caches have been processed, the GSAK userflags are restored to whatever they were before you ran the macro.

```

#####
#
# CMTLogCache Author: Heiner Lieth - Date: Sep 10, 2005
# works for GSAK version 6.5
#
# This is a macro to log all types of cache finds and non-finds online using data keyed
# into the Cachemate log area. Before running this macro, have a browser window open
# and be on-line and signed into geocaching.com. It is best to have the GSAK window and
# the browser window open side by side with only a small amount of overlap.
#
# Assumption: you have made a cacherun and have created a text logs in Cachemate
# on the PDA as follows. Also, you must have checked "Found" and
# Found caches: write note, select a time, tick "Found" so that these records
# are now in the "Found" category.
# For DNFs: write a note in the log area, do not tick Found, change category to "DNF"
# For notes to be submitted as neither DNF nor Found, write this note in the log
# area and change the category to "Notes"
# Found caches that have no text need to have the end or start time set to be included.
# When the macro runs, at the web site:
# - the log screen will be set correctly for Found, DNF, Write Notes and Attended
# - current date is the default
# - place cursor in note section on web page and hit CTRL-V to paste the log; tab to
# other fields and select as needed
# Note that after the log is submitted, the log note in the GSAK database will be
# removed since you still need to get the version and Found status via Pocket Queries..

# NOTE: existing Userflag checks will be cleared and restored at the end
DATASAVE data=$d_UserFlag

# Clear flags because we will need to use the userflag to identify caches that have logs
Userflag type=clear range=all
Macroflag type=clear range=all

Pause MSG="Hotsync PDA and then hit return"
$PRG="C:\Documents and Settings\Heiner\My Documents\Play\Geo\GSAK\CMT\CMextract.bat"
Runpgm pgm=$prg Wait=Yes
MacroSet Dialog=CachemateLog VarName=$CacheMateDNF
CACHEMATE Settings=<macro>
# at this point all DNFs (if any) are userflagged - set macroflag so these
# can later be identified as DNF
Filter name="checked"
if $_filterCount>=1
  While .not. $_eol
    # macroflag will be used for DNFs
    Set $d_MacroFlag=$d_UserFlag
    Goto position=next
  endwhile
endif

MacroSet Dialog=CachemateLog VarName=$CacheMateLog
CACHEMATE Settings=<macro>

Filter name="checked"
#at this point all records in Found, DNF, or Notes categories in Cachemate are on the screen
SORT by="Usersort"
SPEEDMODE Status=Off
Goto Position=Top
While .not. $_eol
  # First copy contents of the log section of the notes for this cache into the clipboard
  CLIP tags="%UserLog"
  $UseLg="%UserLog"
  If $d_Macroflag
    # This record is a DNF
    WEB url="http://www.geocaching.com/seek/log.aspx?ID=%gcid&LogType=3"
  else
    #if the macroflag is not set then it is not a DNF ie one of the other types of logs
    if not $d_Found
      # This Record is not a DNF, just a note
      WEB url="http://www.geocaching.com/seek/log.aspx?ID=%gcid&LogType=4"
    else
      # all Found types:
      IF $d_CacheType="E"

```

```

        # bring up the log page for this event cache to log as having Attended
        WEB url="http://www.geocaching.com/seek/log.aspx?ID=%gcid&LogType=10"
    else
        # Call up the Found log page for this cache
        WEB url="http://www.geocaching.com/seek/log.aspx?ID=%gcid&LogType=2"
    endif
endif
endif
# remove the log details from GSAK once successfully accepted online
PAUSE Msg="Was log transmitted successfully?"
PURGENOTE Type=LogOnly Range=Current
Goto position=next
Endwhile

Filter name="NONE"
DATASTORE data=$d_UserFlag

<data> VarName=$CacheMateLog
[TfmCmateLog]
rbtLog.Checked=True
rbtNo.Checked=True
rbtNotes.Checked=False
rbtYes.Checked=False
File1.FileName=C:\Documents and Settings\Heiner\My Documents\Play\Geo\GSAK\CMTlogs.gpx
rbtReplace.Checked=True
rbtAdd.Checked=False
rbtFlagNo.Checked=False
rbtFlagYes.Checked=True
rbtDateOnly.Checked=False
rbtDateTime.Checked=False
rbtUserNo.Checked=False
rbtUserYes.Checked=True
rbtCode.Checked=False
rbtSmart.Checked=True
<enddata>

<data> VarName=$CacheMateDNF
[TfmCmateLog]
rbtLog.Checked=True
rbtNo.Checked=True
rbtNotes.Checked=False
rbtYes.Checked=False
File1.FileName=C:\Documents and Settings\Heiner\My Documents\Play\Geo\GSAK\CMTDNF.gpx
rbtReplace.Checked=True
rbtAdd.Checked=False
rbtFlagNo.Checked=False
rbtFlagYes.Checked=True
rbtDateOnly.Checked=False
rbtDateTime.Checked=False
rbtUserNo.Checked=False
rbtUserYes.Checked=True
rbtCode.Checked=False
rbtSmart.Checked=True
<enddata>

```